



## Guild Booth Wins a Ribbon!

Wide variety of pieces inspired by poster makes great display in Billings

By Vanetta Burton

The Missoula Weavers' Guild booth at the June MAWS Conference was a huge success! Taking a spin-off from the conference theme—*Under the Rims*—our group came up with *Over the Edge* as the booth theme challenge for the MAWS Guilds. To find just the right piece to inspire our own group, I searched the internet, looking for a poster or photo of the Billings area with enough diversity to get as many members as possible to participate.

The poster that was selected is shown at far right. It offered a wide range of colors, interesting shapes and textures. Nineteen Guild members agreed to weave pieces inspired by it.

The view in the poster overlooks Billings from the Black Otter Trail. The original measured 16" x 12" but it was blown up to almost twice that size. Two of these large copies were cut into random pieces by guild members—allowing each

to select the piece that she wanted to work from.

The results were amazing and MAWS Conference participants loved our booth! Because of the huge response from our

win for Best Use of Conference Colors.

Thanks to everyone who participated. A special thanks to **Nancy Edwards** who wove the beautiful ribbons that were awarded to the Guilds and individuals who won the judges' votes.

**Missoula Weavers Guild**—Best Use of Conference Theme

**Prairie Handspinners**—Best Use of Conference Colors

**Rickie van Berkum** (Missoula Weavers Guild)—Best Use of Conference Colors by an Individual

**Caroline Westenberg** (Billings Weavers Guild)—Judges' Award for Best Individual Piece  
Congratulations!



Photo: Karla Long

Guild members we were able to fill every inch of our space with beautiful and unique pieces. A third copy of the poster was displayed in our booth and presented to the Prairie Handspinners in recognition of their



### August Meeting

**Date:** Saturday, August 14, 2010

**Time:** 12:00 Noon

**Place:** Bonnie Schuster's home

**Address:** 403 Evans, Missoula

**Please bring:** A potluck dish to share

**Program:** Planning activities for coming year

**Directions:** Brown house, corner Hilda & Evans by Bonner Park in Univ. area. Coming from South Higgins, Evans is one block south of the new roundabout. Coming from Arthur, Evans is one block south of the stop light at Beckwith and Arthur.

## Editor's Notes

### What's new for 2010-11? Color!

Those of you who receive the newsletter by e-mail will now see it in color, since we can produce a color pdf without adding to the cost. We'll continue to print it in black-and-white for those who receive it by post.

### What happened to the logo?

The familiar logo is on "hiatus". I wanted to be able to change the color of the nameplate each month, so I created a similar logo that will let me do that in my Adobe InDesign program.

### Thank you

Thank you to Vanetta Burton for the cover article, Karla Long for the booth photo, and Leslie Taylor for the photos on page 3. Thank you to Sondra for the Summer Newsletter. Those lambs are so cute!

### Hyperlinks

If you receive the newsletter via e-mail you should be able to click on any web site address in the text to go directly from the pdf newsletter to the web site.

### Newsletter items

Send photographs, letters, tips, reviews and classified ads to Heather Torgenrud at [fjord@blackfoot.net](mailto:fjord@blackfoot.net) or P.O. Box 490, St. Ignatius, MT 59865, or call 726-3551.

## Your Letters

### A place for news and ideas

This is your newsletter. Please consider sharing ideas, comments, tips and news here.

Send by e-mail  → 

Or by post  → 



## Classified Ads

**Icelandic Lambs and Wool for Sale:** I have some very nice registered Icelandic lambs for sale this year, some with particularly excellent AI bloodlines. There are 4 ewe lambs looking for new homes: white (will be nicely horned), spotted black badgerface, solid moorit, and moorit mouflon patterns. And 2 ram lambs who would each love to have a flock of ewes of their own. One is a very well built solid black (carries spotting) and the other is either white or black badgerface (twins—I'll be keeping one, but am not real particular about which one it will be). I also have a variety of Icelandic fleeces (raw—not processed). If you are interested or have questions, give me a call! Contact: Sondra Gibson—Raven's Rest Icelandics <http://www.RavensRestIcelandics.com>. E-mail: [sgibson@RavensRestIcelandics.com](mailto:sgibson@RavensRestIcelandics.com). Phone: 777-2334 or 210-9976.



Above and at right: Sondra's Icelandic lambs

Please go to page 4 for more classified ads!

## Tromp as Writ

Newsletter of the Missoula Weavers' Guild

### Officers for 2010-11

**President:** Coby Johnson  
[coburn47@hotmail.com](mailto:coburn47@hotmail.com) • 543-3303

**Treasurer:** Karla Long  
[wklong@bresnan.net](mailto:wklong@bresnan.net) • 543-4076

**Program Coordinator:** Joan Contraman  
[joan@spinningfiber.net](mailto:joan@spinningfiber.net) • 961-4473

**Sec'y/Newsletter:** Heather Torgenrud  
[fjord@blackfoot.net](mailto:fjord@blackfoot.net) • 726-3551

Dues \$20/year. Pay at meeting or send to Treasurer:

Karla Long  
1204 Cooper  
Missoula, MT 59802

## Weaving Terminology

### References available on the web

- 1 *Handwoven* has a two-page glossary called Weaving Terms. Click on Learn to Weave at <http://www.weavingtoday.com>.
- 2 Madelyn van der Hoogt of The Weavers' School offers a Pocket Dictionary of weaving vocabulary. Click on Resources at <http://www.weaversschool.com>.
- 3 Joanne Hall of Glimåkra USA includes a glossary of terms on her web site. Click on Glossary at <http://www.glimakrausa.com>.
- 4 Interested in Native American weaving? A glossary from Ann Lane Hedlund's *Beyond the Loom: Keys to Understanding Early Southwestern Weaving* appears at <http://cumuseum.colorado.edu/Exhibits/ThreeCultures>. Click on Glossary.

# Congratulations Mountain Colors!

Local yarn company featured in *Handwoven Magazine*

Our Guild's own Leslie Taylor and her business partner, Diana McKay, own Mountain Colors, a wholesale company in the Bitterroot that creates beautiful handpainted yarns like the ones shown here.

If you subscribe to *Handwoven* you probably saw *Weave Your Colors*, an article in the May/June 2010 issue that's all about Mountain Colors, their yarns, the fibers they use, their approach to color and how they got started. If you don't subscribe you can see the magazine at the Missoula Public Library.

Leslie says Mountain Colors' sock yarns work well for weaving and the Weavers' Wool and Wool Crepe make great warp. If you use handpainted yarns for both warp and weft you'll automatically get a very nice random plaid with just one shuttle! The colors are also beautiful when used as stripes alongside a solid color.

For more information go to <http://www.mountaincolors.com>.—*H.T.*



Photos on this page courtesy Mountain Colors

**Leslie says: "Because we sell yarn in hanks, not cones, the yarn needs to be placed on a swift or on the legs of an upturned chair and wound into balls or with care directly onto the warping board."**



Leslie Taylor, left, and Diana McKay of Mountain Colors

## Upcoming Events

### Plans for upcoming guild programs on agenda for August meeting

Please bring all your ideas and suggestions for activities to the August meeting. Hope to see you there!

### Bonnie Tarses workshop

Plans are still in the works for a Bonnie Tarses workshop in October. We should have more information soon.

### Plans for 2012 MAWS conference to be discussed at September meeting

We'll discuss plans for the 2012 conference at the September meeting. For more information please see the letter from Conference Chairman Diana in the recent Summer Newsletter.

If you have an idea for a conference bag made from jeans, Diana asks that you please make an actual sample to bring to the September meeting.

# Tromp as Writ

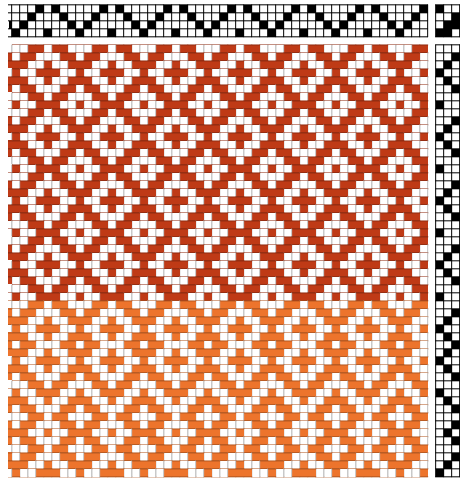
## What does it mean?

Some new weavers might not be familiar with the phrase we use for the title of our Guild newsletter. It is an old-fashioned way of giving directions to *tromp* (step on the treadles) *as writ* (as the threading is written). In other words, it means that the treadling order follows the threading order.

In classic overshot *tromp as writ* means that overlapping pairs in the threading are used for the treadling order.

A simpler example is this point twill or rosepath draft adapted from Marguerite P. Davison's *A Handweaver's Pattern Book*. The section with brown weft is *tromp as writ*: the pattern is threaded 4,3,2,1,2,3,4,1 and it is treadled in the same order. In contrast, the section with orange weft is treadled in Ms and Ws fashion, forming a completely different pattern, only one of countless possible variations.

Instead of *tromp as writ* some weavers say *treadled as drawn in*, since drawing in is an old way of saying threading. A handwritten coverlet pattern from 1837, described by Mary Meigs Atwater in the January 1947



*Shuttle-Craft Guild Bulletin*, used another way of saying the same thing: *spring as you draw*.

The draft above is written for a sinking shed (counterbalance) loom, as are all the drafts in *A Handweaver's Pattern Book*. If a draft written for a sinking shed loom is woven as is on a rising shed (jack) loom, the pattern shown in the draft will appear face down on the loom. If you want to weave the pattern face up simply tie up the blank spaces instead of the filled-in squares.—  
*H.T.*

## Classified Ads continued from pg. 2

**Joseph's Coat** has lots of new **fibers for spinning**—including local products from Kalaya Farms. Other products of potential interest include lots of new **books** on spinning and weaving, in stock **spinning wheels**: Ashford Traditional, Kiwi, a used Clemes (more to come!), and 16-yard **warping boards** of solid oak (only \$85). We also have one we would lend to customers. Janet Sullivan, Joseph's Coat, 115 S. 3rd St W., Missoula, MT 59801, 406-549-1419, <http://www.josephscoat yarn.com>, [josephscoat yarn@gmail.com](mailto:josephscoat yarn@gmail.com).

**Ashford Drum Carder for Sale:** Carder is 7½ inches wide. It has been used very little. Price \$150. Call Brenda at 406-626-5750.



### Refreshments Reminder

**August:** Potluck  
**September through May:** Sign up at August meeting

### Spinning Night Anyone?

Joseph's Coat would like to host a spinning night one to three times a month. Please call Janet to suggest a day and time! 406-549-1419.

## *Tromp as Writ*

c/o Heather Torgenrud  
P.O. Box 490  
St. Ignatius, MT 59865

To:

---

---

---